

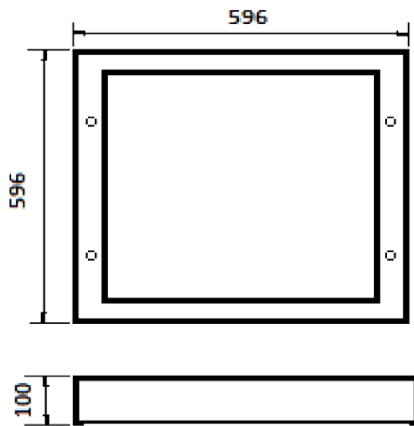
METROLED STREAMLINE

LOW BAY CUTOFF LIGHT

WADCO
LIGHTING[®]

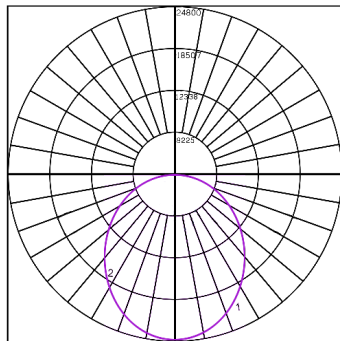


5 Year Warranty



POLAR CURVE

MTSL220SC75N




Maximum Candela = 24853

Located At Horizontal Angle = 0, Vertical Angle = 0

#1 – Vertical Plane Through Horizontal Angles (90 - 270)

#2 – Vertical Plane Through Horizontal Angles (180 - 0)

SPECIFICATIONS

- Aluminium housing
- Corrosion resistant
- Rated to IP66
- Vossloh LED's and Driver 
- Wattage: 140W or 190W
- Instant ON/OFF switch
- Supply voltage: 220V-240V
- Acrylic diffuser

DIMENSIONS

- 100mm(H) x 596mm(W)
- Weight: 11.2KG

OPTIONS

- Recessed or surface mounted
- Colour: 3000K or 5000K
- 3 hours auxiliary lighting in the event of power failure

sales@wadco.com.au

www.wadco.com.au